



Meridian Solar Farm

EN010169

Volume 2

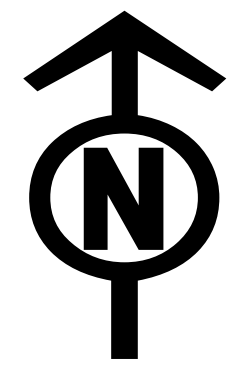
Plans

2.1 Overall Location Plan

APFP Regulation 5(2)(i)(i)

Infrastructure Planning (Applications:
Prescribed Forms and Procedure)
Regulations 2009

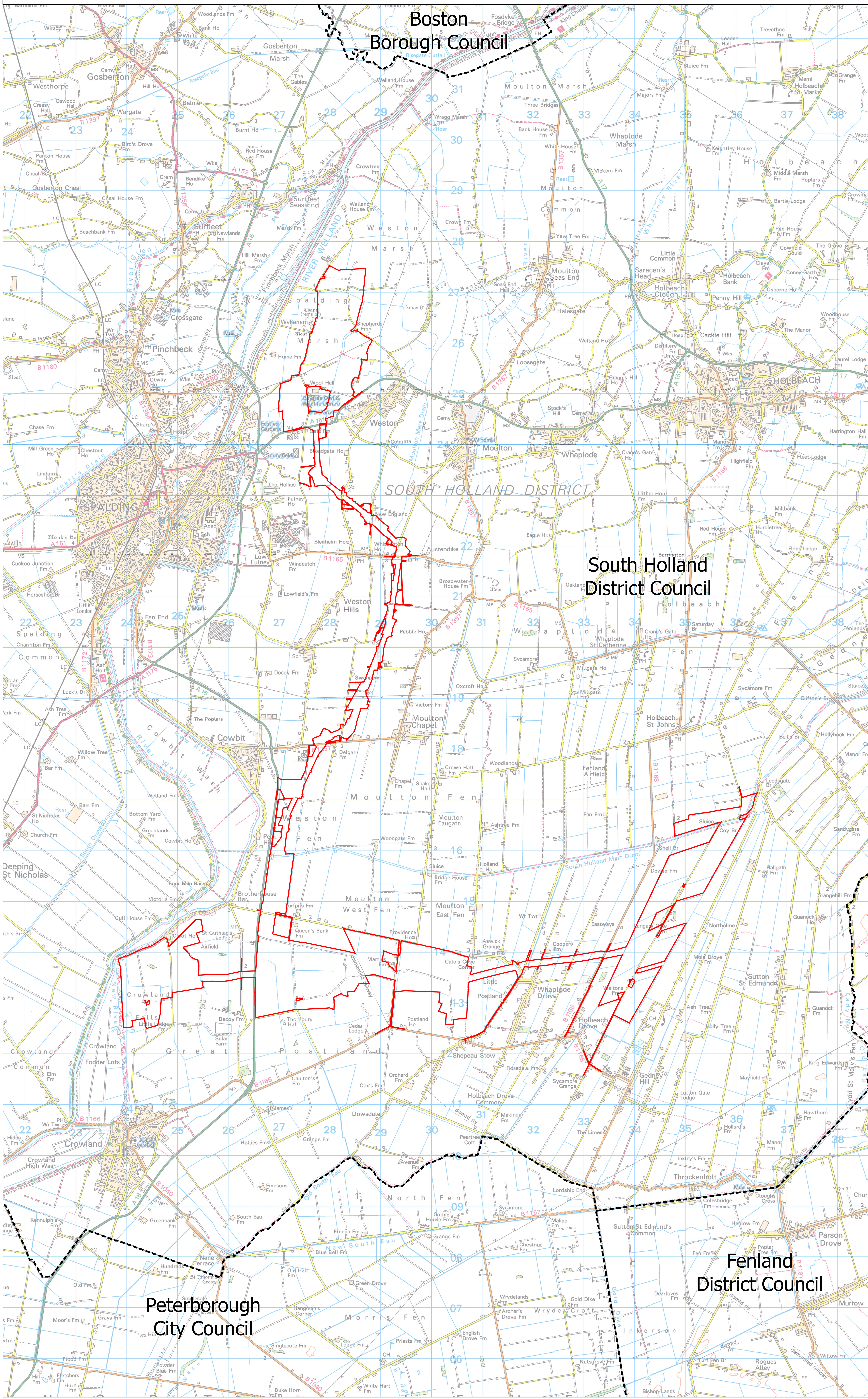
March 2026



MERIDIAN SOLAR FARM
LOCATION PLAN
REGULATION 5(2)(O)
SHEET 1 OF 1



SITE MAP



LEGEND
 - - - Local authority boundary
 — Order Limits

Notes
 This drawing is scaled at paper size A0, therefore any prints taken at smaller sizes will affect accuracy of the measurement units and should not be scaled against.
 The local authorities' boundaries and titles are correct at the time of submission.

Coordinate System: British National Grid
 Sheet X Centroid Coordinate: 530092 Sheet Y Centroid Coordinate: 319356

0 0.5 1 1.5 2 2.5 Kilometres

BACKGROUND MAPPING INFORMATION HAS BEEN REPRODUCED FROM THE ORDNANCE SURVEY BY PERMISSION OF ORDNANCE SURVEY OF THE CONTROLLER OF HIS MAJESTY'S STATIONERY OFFICE. © CROWN COPYRIGHT AND DATABASE RIGHTS (2025) ORDNANCE SURVEY AC0000808122. BLUESKY INTERNATIONAL LTD ©

Issue	Date	Remarks	Drawn	Checked	Approved
0	MAR 2026	FOR DCO SUBMISSION	EB	JPC	AK

Title
 MERIDIAN SOLAR FARM
LOCATION PLAN
REGULATION 5(2)(O)
SHEET 1 OF 1



Application Number
 ENO10169

Meridian Drawing Reference
 DCO_LP/01

Scale	Sheet Size	Sheet	Issue
1:25,000	A0	SHEET 1 OF 1	0